

D-Ended Sight Glass Fittings PN 25

Type KL 630

Pressure rating:

25 bar
higher pressures on request

Base frame:

1.4404 / 1.4571 / 1.4435 / 1.4462 / ST37 / H2
on demand with APZ DIN EN 10204-3.1
flange thickness: 25mm

Top frame:

1.4301 / 1.4404 / ST37 / H2
flange thickness: 15mm

Bolts:

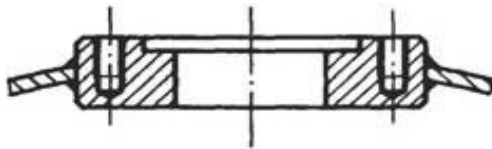
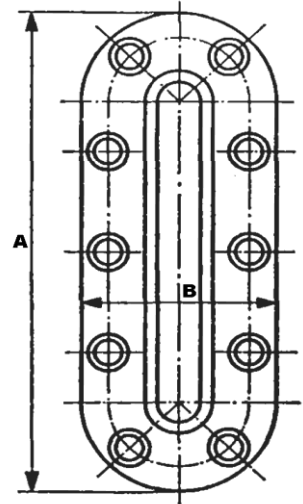
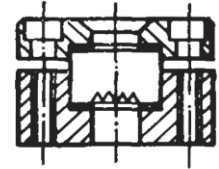
DIN 912 A2-70 or A4-70

Sight glass:

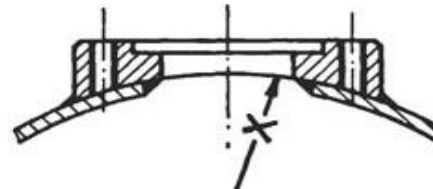
borosilicate glass (transparent or reflexglass)
DIN 7081 (up to 243°C)

Seals (FDA compliant):

EPDM, Reinz AFM 34, PTFE
others on request



version with blind tapings



version with cylindrical pad shape

Remark:

Please check the seal area of the base flange after welding; adjust it if uneven

Ordering excmple:

5 D-Ended Sight Glass Fittings type KL 630 Size 5 with radius R = 307mm
base frame: 1.4404
top frame: 1.4301
Gaskets: EPDM

Size	Mounting Size (mm)		View (mm)		No. Of M10 Bolts	Glass Dimensions
	A	B	height	width		
1	186	80	121	15	10	34/17 x 140
2	211	80	146	15	10	34/17 x 165
3	236	80	171	15	12	34/17 x 190
4	296	80	231	15	14	34/17 x 250
5	326	80	261	15	16	34/17 x 280
6	366	80	301	15	18	34/17 x 320
8	386	80	321	15	18	34/17 x 340



Manfred Kessler GmbH
Schauglasarmaturen
Grienmatt 44
D-79650 Schopfheim

Tel.: +49 (0) 7622 62343
Fax: +49 (0) 7622 7197
E-mail: info@kessler-sightglass.com
www.kessler-sightglass.com